

Unbreakable® Walking-Stick Umbrella Standard—Fabric-Replacement Kit



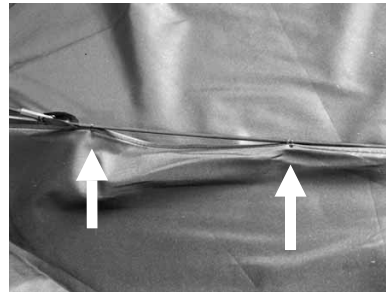
Models U-111 and U-115

Model U-112

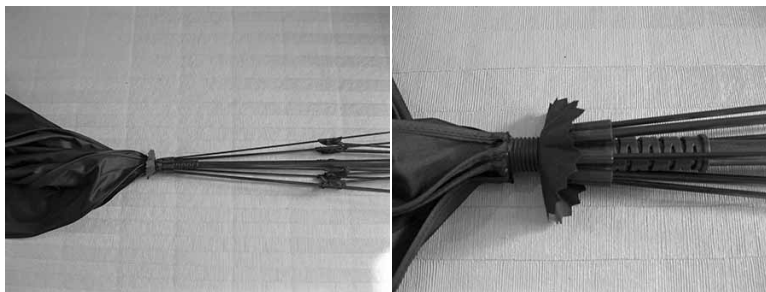
1. In models U-111 and U-115 unscrew the plastic cap at the top of the canopy and pull that cap together with the fabric ring off the main rod. In model U-112 remove the screw holding the plastic cap at the top of the canopy, and pull that cap off the main rod. Next, with pliers, loosen up the steel cap and gently slide it off the main rod together with the fabric ring.



2. With the umbrella folded, pull the metal tips off the rib ends.



3. Open the umbrella, and cut the two sets of threads that attach the fabric to the ribs.



4. Fold the umbrella and take off the old fabric. The round piece of fabric that sits atop the upper nest should remain there.



5. With the umbrella folded, put on the new fabric, lining up the seams with the ribs.



Models U-111 and U-115



Model U-112



6. In model U-115 put the fabric ring on the main rod at the top of the canopy and screw on the plastic cap on the main rod. In model U-112 put the fabric ring, steel cap, and the plastic cap on the main rod at the top of the canopy and then fix the plastic cap to the main rod with the screw.



7. Affix the metal tips to the ends of the ribs.



8. Slowly open the umbrella to make sure you didn't mix up any tips and ribs. The ribs will be bent like shown in the photo. This is normal.



9. With a needle and thread, attach each seam of the canopy to its rib. Do not puncture the surface of the fabric; thread the needle only through the double-folded seam between the fabric wedges.



10. You have done it!